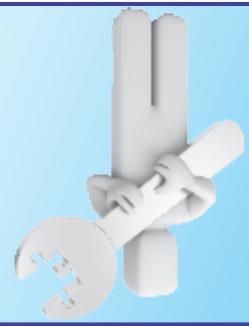


**HASSLE FREE  
FLAWLESS  
MAINTENANCE  
BY IN HOUSE  
COMPANY**



**WORLD CLASS AMENITIES**

**ELECTRICAL**

- Modern electrical system with concealed copper wiring by **Polycap / Anchor**.
- **Legend / Havells** make quality modular switches & accessories.
- TV / Telephone / A.C. / Cooler points at appropriate places.
- Multi stage safety system.

**WOOD WORK**

- Designer ceramic tiles by **Kajaria / Somany**.
- Anti-skid ceramic tiles on floor.
- Sanitary ware by **CERA / Jaquar**.
- C.P. fitting & accessories by **Jaquar / Kohler**.

**DESIGNER TOILETS**

**STRUCTURE**

- Earthquake resistant RCC framed structure.
- Solid brick wall with cement mortar.
- Rain water harvesting system to recharge water level.
- Appropriate fire fighting system.

**APARTMENT FEATURES**

- Pop finish on wall & ceiling with decorative cornices & beading.
- Premium quality acrylic distemper paint on walls & ceiling by **Asian Paints**.
- Satin finish paint on doors & windows.
- Sturdy stone door & window frames.
- Flooring of vitrified tiles by **Kajaria / Somany**.

**KITCHEN**

- Provision for aqua guard & modular kitchen.
- Provision for geyser in kitchen.
- 2' ties above the counter.
- Stainless steel sink.
- Black granite working counters.

**WOODEN WINDOWS HAVING GLASS PANELS:**

- Tough Water proof ISI mark 30mm flush doors.
- Well designed laminated main door of 30mm thickness.
- **Dorset / IPSA** make designer fittings on doors & windows.

**SPECIFICATIONS**



*Designed for those, seeking for lifestyle par excellence. Imperial Heights fuses together the finest that nature and man can provide.*



**2 & 3 BHK APARTMENTS & PENT HOUSES**  
B-Block, Vaishali Estate, Near Gandhi Path, Jaipur.

- Just 3 kms from Vaishali Nagar and Chitrakoot.
- Located on existing asphalted 200 feet wide sector road on Gandhi Path which starts from Queens Road.
- Proximity to major civic amenities.
- Most convenient roads connectivity through 200 feet wide sector road joining Ajmer Road and Sirsi Road.
- Healthy environmental elements and pollution free area.
- Less than 1.5 km from local shopping area.
- Medical facilities available within 1.5 km.
- 8.5 kms from Jaipur Junction Railway Station.
- 9 kms from Sindhi Camp Bus Stand.



**Location Plan**  
Not to scale

**Ongoing Projects**



Arcadia Greens - Near Gandhi Path



Silver Crown - Gandhi Path, Vaishali Nagar



Vardhman Horizon - Jhotwara



Vardhman Sampada - Near Gandhi Path

Color Splash



**VARDHMAN GROUP**  
G-1, Western Heights, S-21, Shyam Nagar, Jaipur-19, (Raj.) Tel.: 0141-4020400  
Email: info@vardhmangroup.org Website: www.vardhmangroup.org  
Architect: Space Grid, C-49, Vidhya Apartment, Paras Marg, Bapu Nagar, Jaipur. Ph.: 93149 18766, 93145 10603

For Sales Enquires Contact:  
**+91 9799 234 666, 9799 234 777**  
**+91 9799 234 888, 9799 234 999**

The brochure is not a legal document. It only describes the conceptual plan to convey the intent and purpose of the developers. The specification and details mentioned in this brochure are tentative & are subject to change at the sole discretion of the developers and/or the architects.

**VARDHMAN GROUP**  
Concreting Dreams  
www.vardhmangroup.org

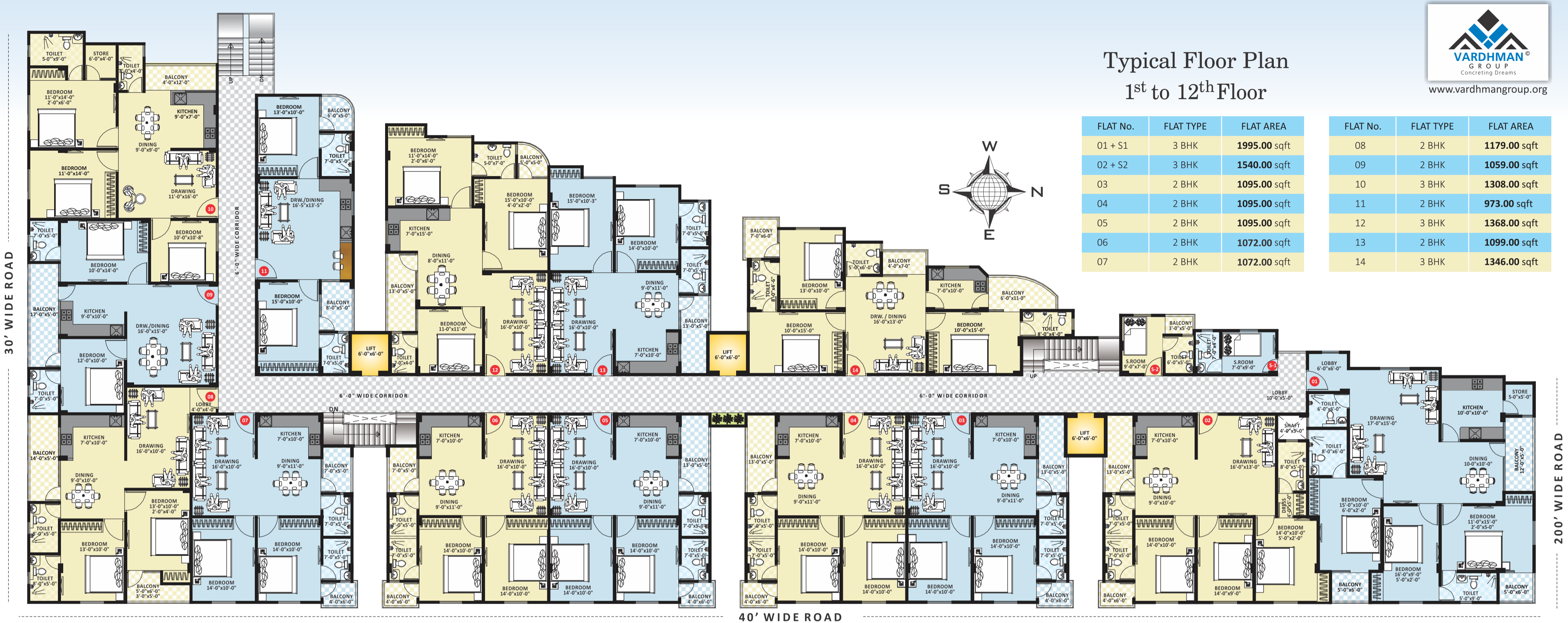


**2 & 3 BHK APARTMENTS & PENT HOUSES**

## Typical Floor Plan 1<sup>st</sup> to 12<sup>th</sup> Floor

FLAT No.	FLAT TYPE	FLAT AREA
01 + S1	3 BHK	1995.00 sqft
02 + S2	3 BHK	1540.00 sqft
03	2 BHK	1095.00 sqft
04	2 BHK	1095.00 sqft
05	2 BHK	1095.00 sqft
06	2 BHK	1072.00 sqft
07	2 BHK	1072.00 sqft

FLAT No.	FLAT TYPE	FLAT AREA
08	2 BHK	1179.00 sqft
09	2 BHK	1059.00 sqft
10	3 BHK	1308.00 sqft
11	2 BHK	973.00 sqft
12	3 BHK	1368.00 sqft
13	2 BHK	1099.00 sqft
14	3 BHK	1346.00 sqft



40' WIDE ROAD

